



Welcome Back and State of the College

Mary C. Watzin, Dean | August 18, 2017



Welcome New College Faculty and Staff!



Dean's Office

- **Shane Jarvis** – Assistant Dean, Finance and Business
- **John Grimes** – Senior HR Specialist
- **Tori Edmonson** – Accountant
- **Alex Loflin** – Student Recruiter
- **Meg Smigielska** – Pre-Award Accountant

Forestry & Environmental Resources

- **Mary Lou Addor** – Coordinator Sentinel Landscapes
- **Dominic Chirico** – Vehicle Pool and Field Equipment Supervisor
- **Shelley English** – Extension Support Specialist
- **Nichole Howe** – Advisor
- **Peter Lazaro** – Research Associate
- **Kimber Lunsford** – Assistant Director of Undergraduate Programs
- **Robert Scheller** – Professor, CFEP Cluster in Emerging Plant Diseases and Global Food Security
- **Morgan Schulte** – Research Associate
- **Louise Vaughn** – Extension Associate

Parks, Recreation & Tourism Management

- **Dr. Kangjae (Jerry) Lee** –
Assistant Professor
- **Elizabeth Mazak** –
Project Manager
- **Gabriella Sinkovic** –
PGM Coordinator





Forest Biomaterials

- **Alex White** – SMT Program Coordinator
- **Nathalie Lavoine** – Assistant Professor (January)

Environmental First Year Program (ENVFY)

- **Dr. Steph Jeffries** –
Director
- **Nichole Howe** –
Advisor



Recruitments Underway

College Staff

- IT Director
- Business Officer
- Post-Award Accountant



Faculty

- Extension Forestry
- Extension Wood Products
- Molecular Genetics and Forest Health
- CFEP Global Change
- CFEP Global WaSH

Status and Health of CNR

- Incoming Class of Students
- Enrollment Trends
- **Base Budget of the College**
- Grant Funding and Trends
- Gift Funding



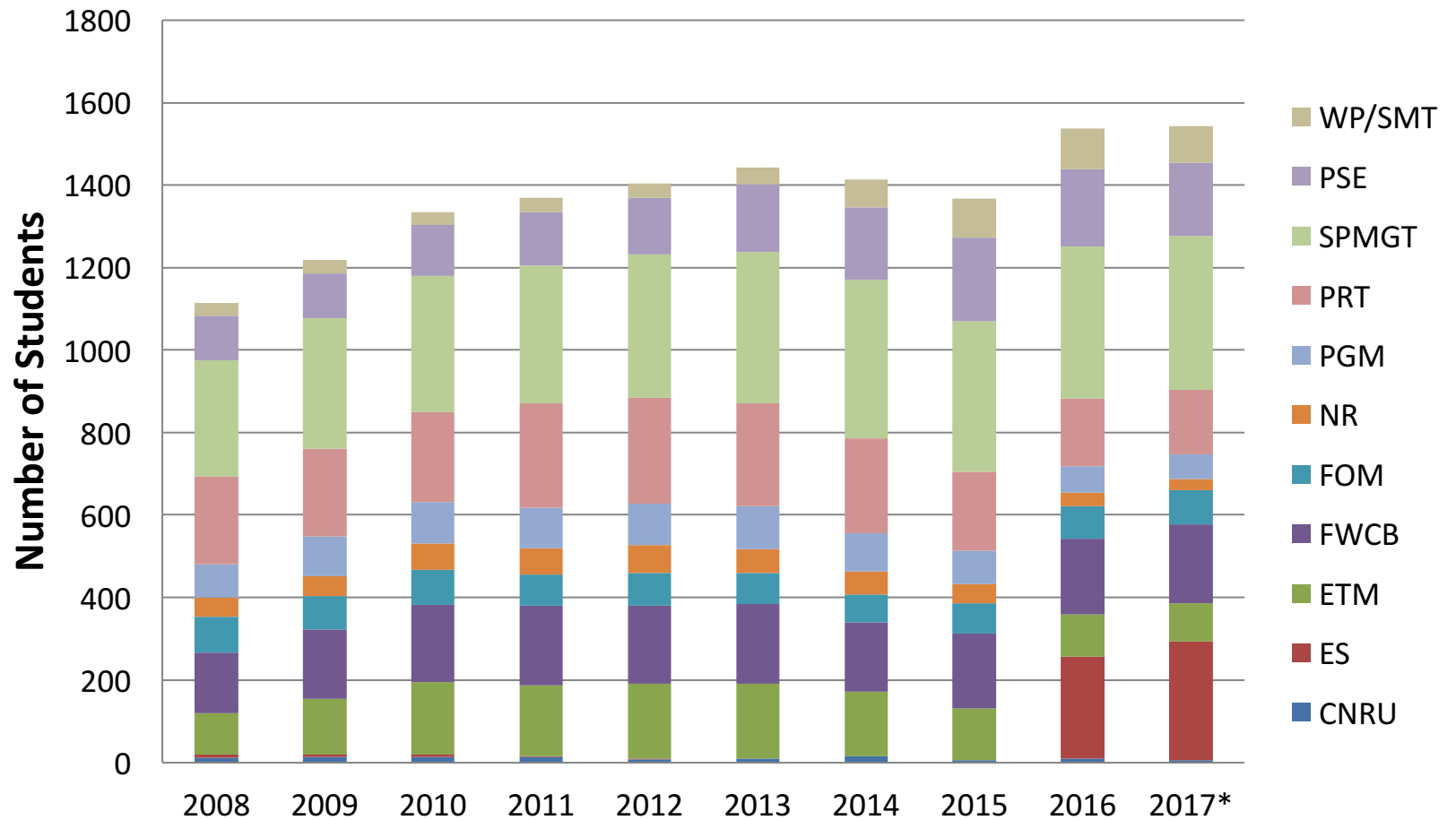
Undergraduate Admissions

	First year*	Transfer	All Students*
Enrolled	252	91	1553
% Female	38%	34%	36%
% Non-white	10%	15%	12%
% Out-of-state	18%	<1%	13%
% International	2%	0	1%

*Including EFY-PSE students

*Enrollment Data as of 8/17/17 (Official data will be available after Census Day)

Undergraduate Enrollment



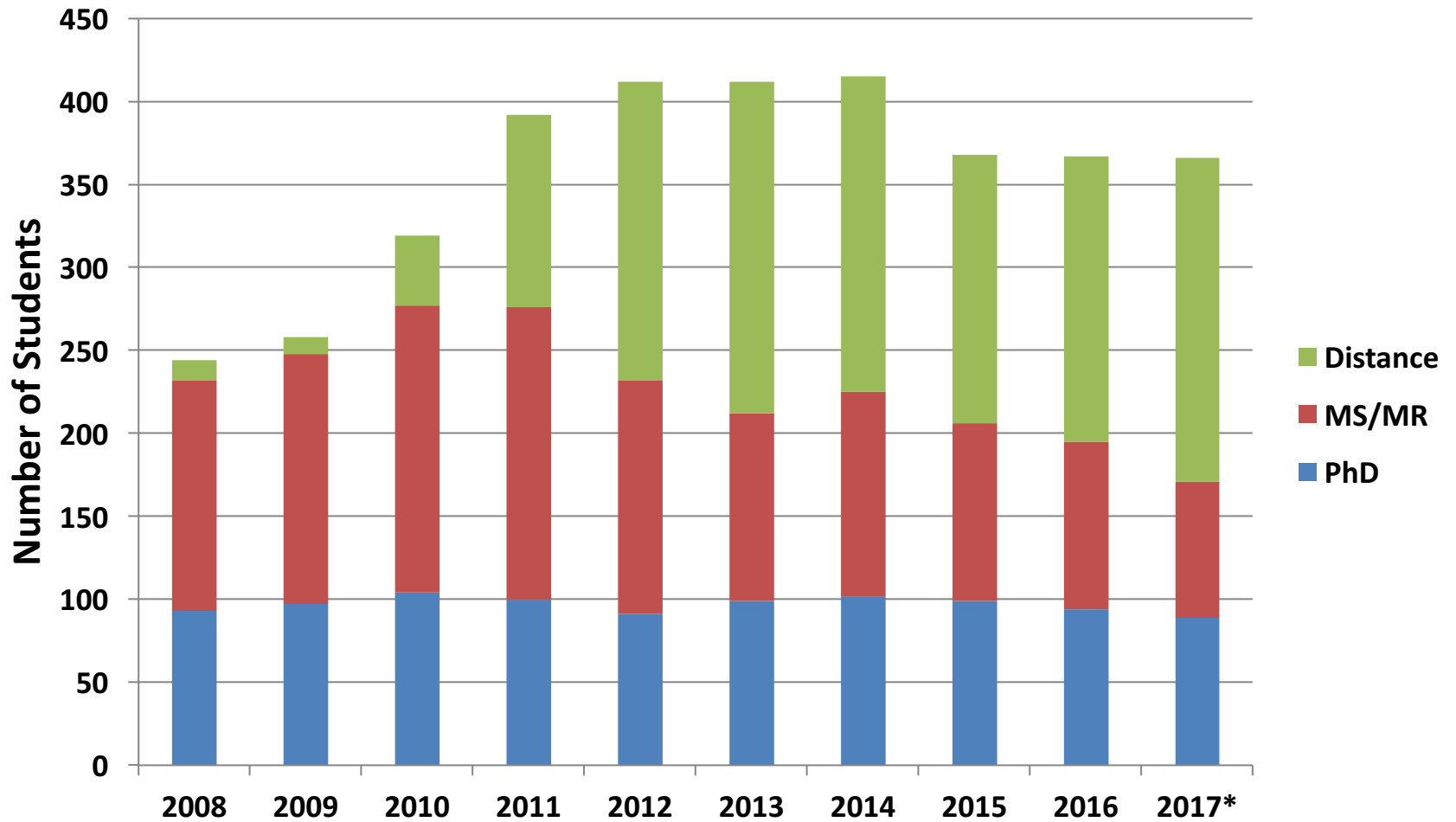
*Enrollment Data as of 8/17/17 (Official data will be available after Census Day)

Graduate Student Admissions

New in Fall 2017: 69 MS/MR; 22 PhD students

	MS/MR	PhD	All Students
Enrolled	277	89	366
% Female	49%	45%	48%
% Non-white	10%	11%	10%
% Out-of-state & International	30%	54%	36%

Graduate Student Enrollments



*Enrollment Data as of 8/17/17 (Official data will be available after Census Day)

CNR Budget – Expenditures FY17

Fund Type	Dean	PRTM	FB	FER	Total
State App. Academic	3,605,411	3,725,184	2,536,113	5,759,943	15,626,651
Agricultural Research	152,424	33,152	576,384	1,056,585	1,818,545
Cooperative Extension	12,846	137,891	398,807	893,225	1,442,769
McIntire-Stennis*	186,023	32,324	288,150	637,834	1,144,331
Contracts & Grants	915,132	1,027,940	1,721,862	6,274,325	9,939,259
F&A Receipts	246,742	111,617	101,136	199,134	658,628
NR Foundations**	877,085	156,252	1,608,280	519,127	3,160,744
Gifts/Income (Ledger 7)	194,489	8,829	378,561	1,647,812	2,229,691
Endowment Income	980,515	166,993	223,439	1,014,995	2,385,942
Other***	339,337	150,126	966,001	448,745	1,904,209
Totals	7,510,004	5,550,307	8,798,732	18,451,725	40,310,768

*Actual expenditures for Federal FY16

**Foundations expenditures do not include HF expenses or Timber Deed income

***Service Centers, fees, and other miscellaneous funds



College Budget Outlook

- State appropriated budget relatively stable, but funding model changing
- Legislatively Directed Salary Increases (SHRA and EHRA)
- Timber Deed Income stable this year
- Contracts and Grants, Philanthropy increasing!

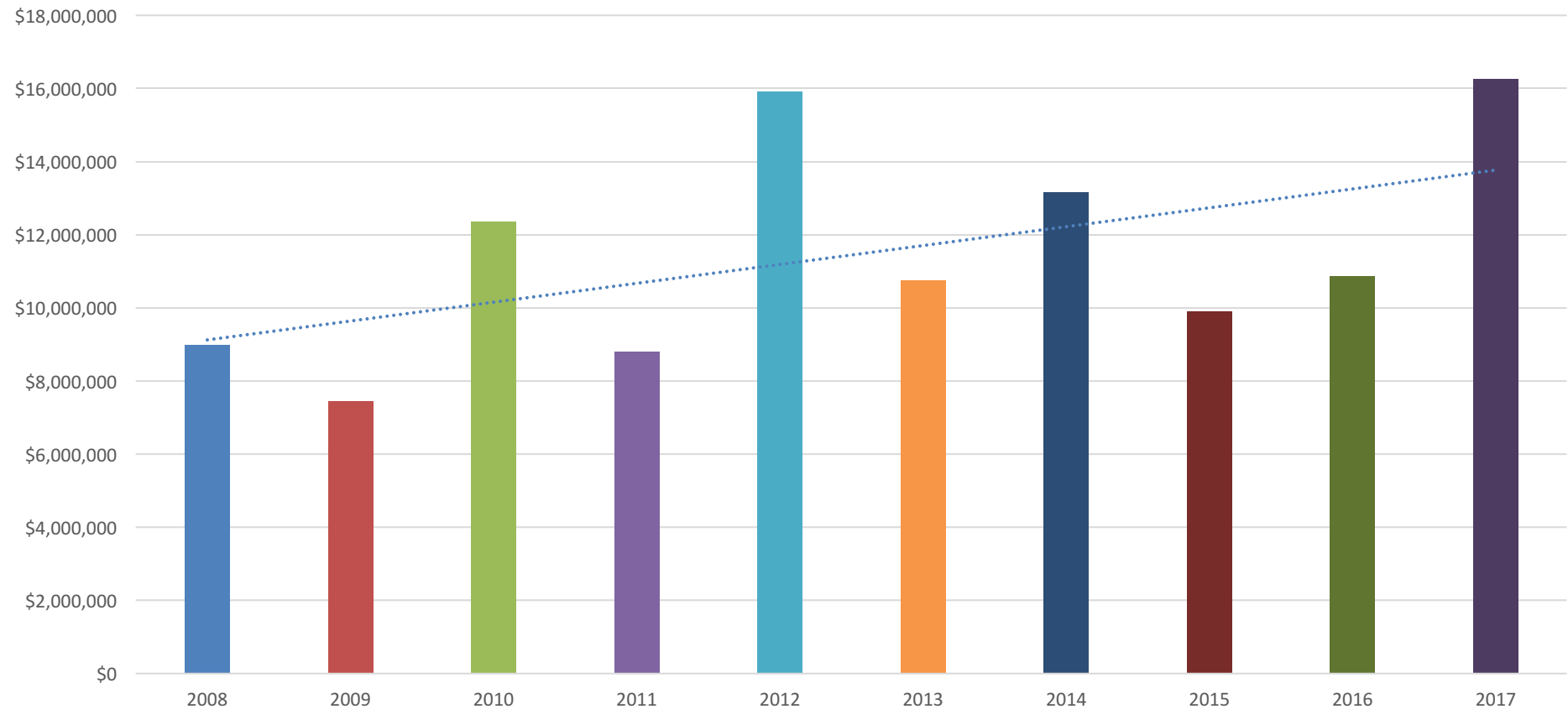
College Sponsored Projects

- Submitted 174 new proposals, a **total of \$60 M**, a substantial increase from \$33.2 M last year.
- **Received 227 awards**, a total of **\$16.2 M**, an increase from \$10.9 M last year.
- College Portfolio:
 - 229 Active Projects (195 last year)
 - Total Value = \$56 M (\$43.7 M last year)



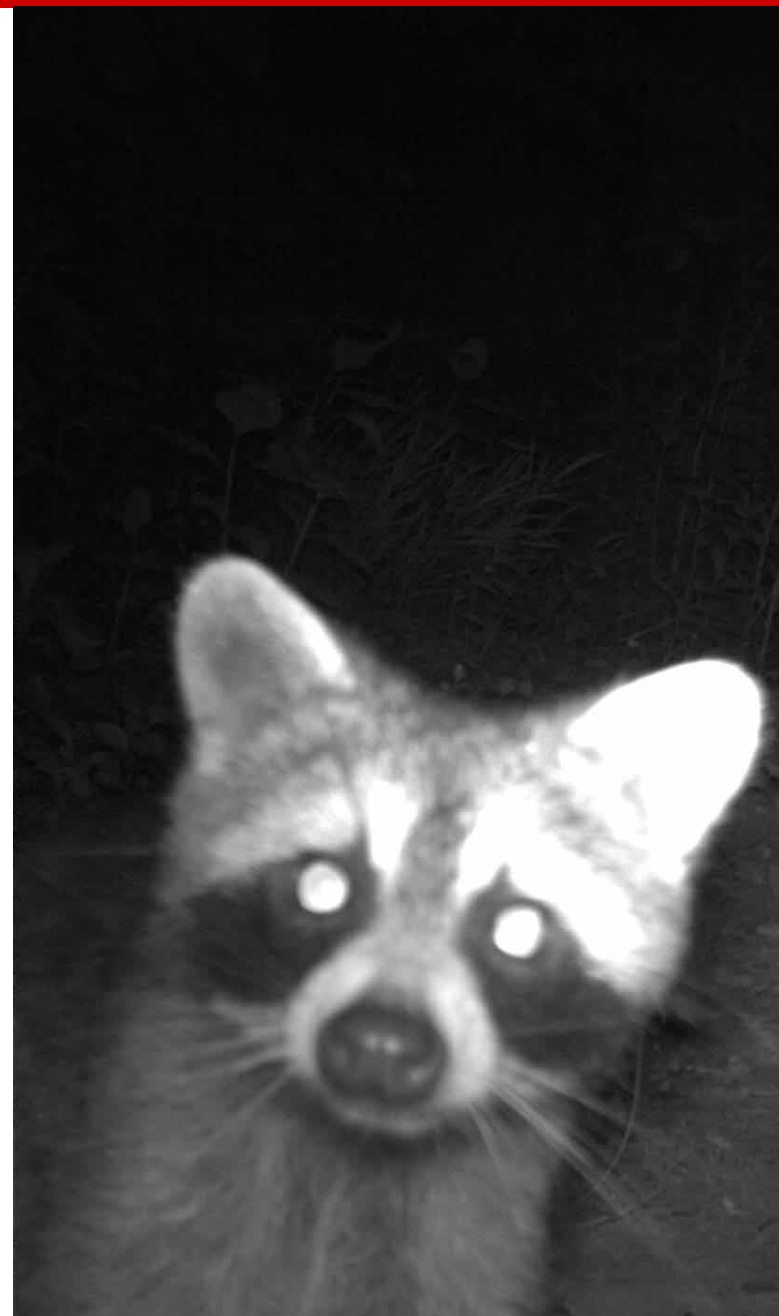
Sponsored Projects – Trends

Awards FY 07 - FY 17



Research Highlights

- **Dr. Richard Venditti** and colleagues in FB, FER and the College of Education were awarded a \$2.75M USDA NIFA grant for teacher training to advance the bioeconomy.
- **Dr. Roland Kays** received \$1M from the NC Wildlife Resources Commission to conduct statewide citizen science camera trap surveys of mammal populations.





Research Highlights

- **Drs. Carla Barbieri, Kathryn Stevenson and Whitney Knollenberg** were awarded a \$500K USDA NIFA grant focused on how agritourism influences middle school students and their parents' decisions on local foods.
- **Dr. Jason Delborne** and colleagues were awarded an NSF grant (\$292K) for a case study of public perceptions of Genetically Modified American Chestnut.

Research Highlights

- **Dr. Kevin Potter** and collaborators received a \$1M NSF grant to uncover the biological, geophysical and socioeconomic factors that lead to large-scale plant and insect invasions.
- **Drs. Josh Gray and Helena Mitasova** led a team awarded a \$250K grant to guide the use of unmanned aerial systems for wetland detection & delineation from the NC Department of Transportation.



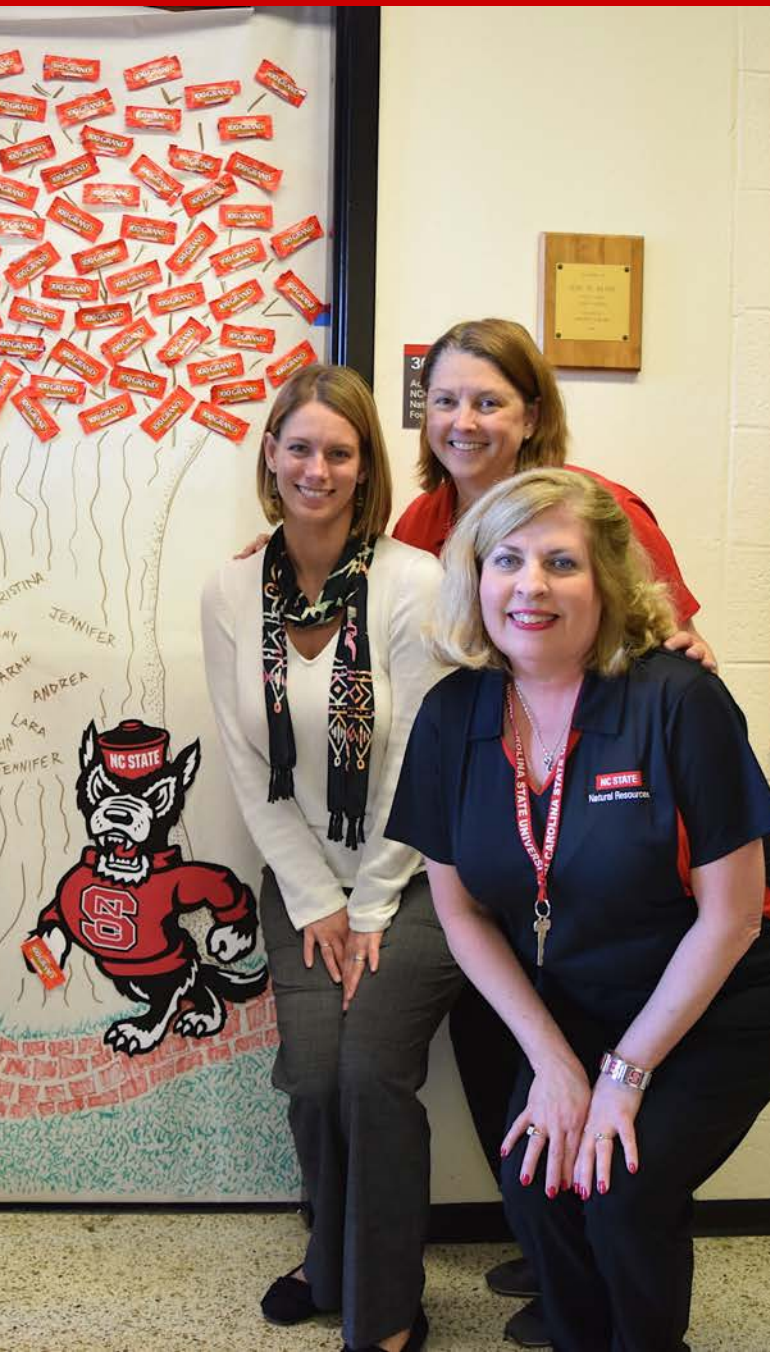


Innovation Highlights

- Patents issued: 2
- Patents filed: 3
- Invention Disclosures Filed: 23
- Commercialization agreements executed: 6
- Chancellor's Innovation Fund:
 - Drs. Duarte Morais and John Bass (CSC) to develop two-way SMS communications technology to enable underserved populations to access web-based networks.
 - Dr. Dimitris Argyropoulos, and colleagues in Chemistry and Biological Sciences, to commercialize anti-infective nanofibrillated cellulose materials that are active against bacteria, viruses and fungi.

College Advancement Office

- Raised **\$3,221,814** – a 33% increase from the last fiscal year and a 16% increase from the three-year average.
- As part of the **Think and Do the Extraordinary Campaign**, the College has a **\$35M goal**. As of June 30, we have raised 62% of our goal. The campaign ends in June 2021.
- **Communications Successes:**
>125 national and international news articles featured College faculty, staff and students.



Extension Highlights

Program impact:

- **Over 38,000 live and on demand webinar views**, with participants from **all 50 states** earning over **8,300 contact hours** for professional development. By training online, participants in webinars **saved over \$7.9 million dollars in 2016**.
- **Provided 12 educational workshops** about NC Present Use Valuation program, **serving 987 participants** who could **save > \$100 million annually**.

Sentinel Landscapes Partnership:

Continuing to build programs in 33 county designated area in eastern N.C.





Forest Assets

- Hofmann Forest Timber Deed fully implemented, EPA mandated water management completed, research increasing.
- Highest priority maintenance renovations on Camp Slocum at Hill Forest (~\$55K) completed; working with NC State facilities to prepare a long-term maintenance plan.
- Updating management plans for other forest properties and working to achieve sustainable forest management certification (SFI).

Facilities Updates

- Renovated the Sustainable Materials and Technology office and collaboration spaces and the offices for the BioResources Journal (first floor Biltmore).
- Completed renovations in PRTM departmental offices and collaborative graduate student spaces.
- Currently renovating mailroom on 3rd floor Biltmore into offices for Forest Assets Team
- Dean's teams on 2nd and 3rd floor Biltmore will be shifting spaces – Advancement, Research, HR. More to come. . . .



College IT Updates

- **2FA Deadline** - October 31, 2017.
 - Last training session session Aug 28
 - Who will be first to complete – there will be a prize!
- **IT Group taking Facilities Responsibility for Biltmore** – more information coming soon, including new forms to route requests
- **ServiceNow** - exploring options for calendar, communications, research and onboarding
- **Internet Wiring Project** - green cables hanging from the ceiling. . .





New This Year in FER

Military Lands Sustainability Certificate

- Train professionals to manage natural resources on and around military bases to preserve natural resources and maintain military readiness

Environmental Assessment Master's Program

- On-line Professional Degree program
- FER sole administrator (AE/CALS left)
- Significantly increases CNR graduate student numbers
- Broadening the scope to include military lands sustainability, wetlands, fire and renewable energy

New This Year in PRTM

Sport and Entertainment Venue Management Certificate

- One-year on-line accelerated program designed with industry experts to advance careers of professionals who manage stadiums, performing arts centers, amphitheaters or arenas.





New This Year in FB

Online MS program reboot

- Creating a modular professional masters program targeted at continuous education supporting the paper industry
- Hiring an on-line teaching technician



New in Geospatial Analytics

PhD in Geospatial Analytics

- Fully approved by UNC-GA this spring.
- Will launch Fall 2018
- Interdisciplinary data science degree program, bringing together faculty from FER, PRTM, and 6 other departments across the campus

Awards and Acknowledgements

- **Dr. Ron Sederoff** wins the **2017 Marcus Wallenberg Foundation Prize** (often called the Nobel Prize in Forestry). **Ron will be honored by the King and Queen of Sweden in October.**
- **Dr. Sunkyu Park** named **the E. J. "Woody" Rice** Associate Professor in Paper Science and Engineering.





Awards and Acknowledgements

- **Dr. Bob Abt** was named the **Carl Alwin Schenck Professor** in Forestry.
- **Dr. Carla Barbieri** received the **Emerging Scholar Award** from the International Academy for the Study of Tourism. Receiving this award is the first step to being elected as a Fellow in the Academy.



Some Goals for the Year: **LISTENING, COMMUNICATION**

- **DoNuts with the Dean**
 - 9/13 at 8:30am (Faculty)
 - 9/15 at 9:30am (Staff)
- **Gabbing with the Grads**
 - 9/21 at 2:30pm
- Undergraduate student listening sessions - TBA
- Internal monthly newsletter
- External Communication - Continuing Honest Broker work
- More to come . . .



Some Goals for the Year:

GRADUATE EDUCATION

- Social event for graduate students and faculty (fall)
- Graduate Student Research Day (spring)
- Comprehensive communication about our programs, our assistantships – to build our reputation

Some Goals for the Year:

DIVERSITY

- Cultural Competency and Inclusion training for faculty and staff
- **RACE: Are We So Different?**
 - Natural Science Museum week of 10/2/17
 - Admission is free, but tickets are required
 - Cultural conversations to follow, week of 10/9/17
- **Project SAFE training** – become a GLBT Ally, Sept. 13, 3:30-5pm.



Make Good Things Happen!

